



**Viewing Information**

This photograph and visualisation is a cylindrical projection panorama. Hold this sheet at a comfortable arm's length from your eyes and curve the image through 90° and turn head to view. Alternatively, the visualisation can be laid flat and viewed by scanning left or right parallel to the sheet maintaining a 50cm viewing distance between your eye and the page.

This visualisation is a tool for assessment and is best used for comparison in the field from the viewpoint location shown. It cannot be considered a substitute for visiting the viewpoint location.

**Technical Information**

Refer to accompanying Technical Methodology.

**Printing Note**

This viewpoint visualisation is spread across a single sheet 841mm wide and 297mm high. To give the correct viewing distance the sheet should be printed at a scale of 1:1 on large format paper and cut to size. Do not print at A3.

**Viewpoint Direction**

The centre of this viewpoint is facing South.

**Cottam Solar Project**

Viewpoint 32 - Existing Winter View  
Figure 8.14.32a





Extent of 50mm Single Frame Image



**Viewing Information**

This photograph and visualisation is a cylindrical projection panorama. Hold this sheet at a comfortable arm's length from your eyes and curve the image through 90° and turn head to view. Alternatively, the visualisation can be laid flat and viewed by scanning left or right parallel to the sheet maintaining a 50cm viewing distance between your eye and the page.

This visualisation is a tool for assessment and is best used for comparison in the field from the viewpoint location shown. It cannot be considered a substitute for visiting the viewpoint location.

**Technical Information**

Refer to accompanying Technical Methodology.

**Printing Note**

This viewpoint visualisation is spread across a single sheet 841mm wide and 297mm high. To give the correct viewing distance the sheet should be printed at a scale of 1:1 on large format paper and cut to size. Do not print at A3.

**Viewpoint Direction**

The centre of this viewpoint is facing West.

**Cottam Solar Project**

Viewpoint 32 - Existing Winter View

Figure 8.14.32a





#### Viewing Information

This photograph and visualisation is a cylindrical projection panorama. Hold this sheet at a comfortable arm's length from your eyes and curve the image through 90° and turn head to view. Alternatively, the visualisation can be laid flat and viewed by scanning left or right parallel to the sheet maintaining a 50cm viewing distance between your eye and the page.

This visualisation is a tool for assessment and is best used for comparison in the field from the viewpoint location shown. It cannot be considered a substitute for visiting the viewpoint location.

#### Technical Information

Refer to accompanying Technical Methodology.

#### Printing Note

This viewpoint visualisation is spread across a single sheet 841mm wide and 297mm high. To give the correct viewing distance the sheet should be printed at a scale of 1:1 on large format paper and cut to size. Do not print at A3.

#### Viewpoint Direction

The centre of this viewpoint is facing North.

## Cottam Solar Project

Viewpoint 32 - Existing Winter View  
Figure 8.14.32a





**Viewing Information**

This photograph and visualisation is a cylindrical projection panorama. Hold this sheet at a comfortable arm's length from your eyes and curve the image through 90° and turn head to view. Alternatively, the visualisation can be laid flat and viewed by scanning left or right parallel to the sheet maintaining a 50cm viewing distance between your eye and the page.

This visualisation is a tool for assessment and is best used for comparison in the field from the viewpoint location shown. It cannot be considered a substitute for visiting the viewpoint location.

**Technical Information**

Refer to accompanying Technical Methodology.

**Printing Note**

This viewpoint visualisation is spread across a single sheet 841mm wide and 297mm high. To give the correct viewing distance the sheet should be printed at a scale of 1:1 on large format paper and cut to size. Do not print at A3.

**Viewpoint Direction**

The centre of this viewpoint is facing South.

**Cottam Solar Project**

Viewpoint 32 - Existing Summer View  
Figure 8.14.32b





**Viewing Information**

This photograph and visualisation is a cylindrical projection panorama. Hold this sheet at a comfortable arm's length from your eyes and curve the image through 90° and turn head to view. Alternatively, the visualisation can be laid flat and viewed by scanning left or right parallel to the sheet maintaining a 50cm viewing distance between your eye and the page.

This visualisation is a tool for assessment and is best used for comparison in the field from the viewpoint location shown. It cannot be considered a substitute for visiting the viewpoint location.

**Technical Information**

Refer to accompanying Technical Methodology.

**Printing Note**

This viewpoint visualisation is spread across a single sheet 841mm wide and 297mm high. To give the correct viewing distance the sheet should be printed at a scale of 1:1 on large format paper and cut to size. Do not print at A3.

**Viewpoint Direction**

The centre of this viewpoint is facing West.

Extent of 50mm Single Frame Image

**Cottam Solar Project**

Viewpoint 32 - Existing Summer View

Figure 8.14.32b





**Viewing Information**

This photograph and visualisation is a cylindrical projection panorama. Hold this sheet at a comfortable arm's length from your eyes and curve the image through 90° and turn head to view. Alternatively, the visualisation can be laid flat and viewed by scanning left or right parallel to the sheet maintaining a 50cm viewing distance between your eye and the page.

This visualisation is a tool for assessment and is best used for comparison in the field from the viewpoint location shown. It cannot be considered a substitute for visiting the viewpoint location.

**Technical Information**

Refer to accompanying Technical Methodology.

**Printing Note**

This viewpoint visualisation is spread across a single sheet 841mm wide and 297mm high. To give the correct viewing distance the sheet should be printed at a scale of 1:1 on large format paper and cut to size. Do not print at A3.

**Viewpoint Direction**

The centre of this viewpoint is facing North.

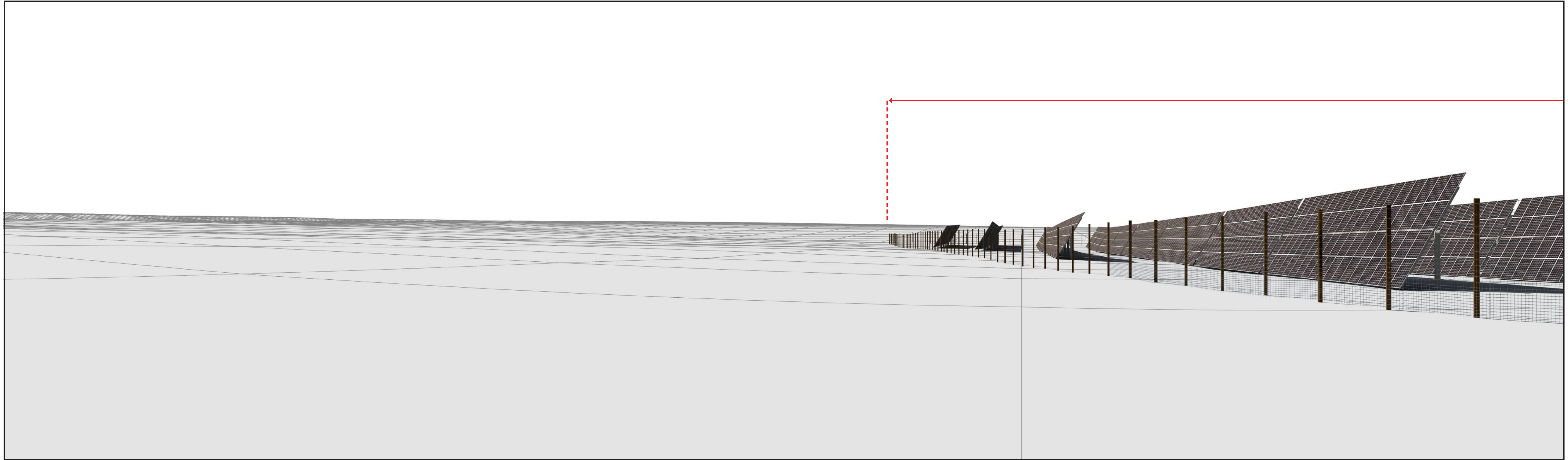


**Cottam Solar Project**

Viewpoint 32 - Existing Summer View

Figure 8.14.32b





**Viewing Information**

This photograph and visualisation is a cylindrical projection panorama. Hold this sheet at a comfortable arm's length from your eyes and curve the image through 90° and turn head to view. Alternatively, the visualisation can be laid flat and viewed by scanning left or right parallel to the sheet maintaining a 50cm viewing distance between your eye and the page.

This visualisation is a tool for assessment and is best used for comparison in the field from the viewpoint location shown. It cannot be considered a substitute for visiting the viewpoint location.

**Technical Information**

Refer to accompanying Technical Methodology.

**Printing Note**

This viewpoint visualisation is spread across a single sheet 841mm wide and 297mm high. To give the correct viewing distance the sheet should be printed at a scale of 1:1 on large format paper and cut to size. Do not print at A3.

**Viewpoint Direction**

The centre of this viewpoint is facing South.

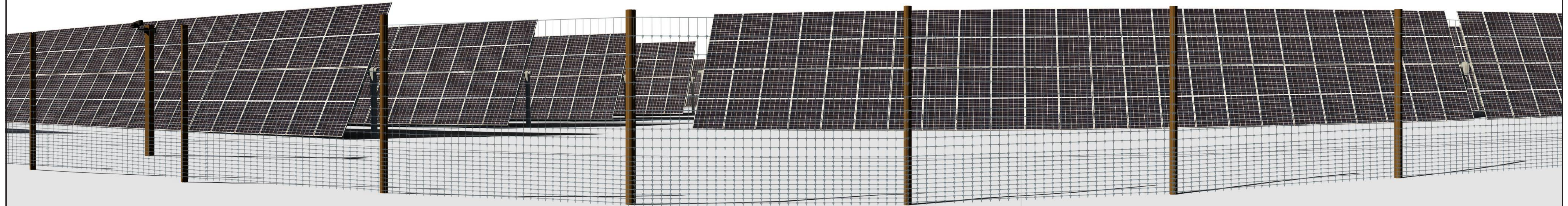
**Cottam Solar Project**

Viewpoint 32 - Infrastructure Model View

Figure 8.14.32c



Site Extents



**Viewing Information**

This photograph and visualisation is a cylindrical projection panorama. Hold this sheet at a comfortable arm's length from your eyes and curve the image through 90° and turn head to view. Alternatively, the visualisation can be laid flat and viewed by scanning left or right parallel to the sheet maintaining a 50cm viewing distance between your eye and the page.

This visualisation is a tool for assessment and is best used for comparison in the field from the viewpoint location shown. It cannot be considered a substitute for visiting the viewpoint location.

**Technical Information**

Refer to accompanying Technical Methodology.

**Printing Note**

This viewpoint visualisation is spread across a single sheet 841mm wide and 297mm high. To give the correct viewing distance the sheet should be printed at a scale of 1:1 on large format paper and cut to size. Do not print at A3.

**Viewpoint Direction**

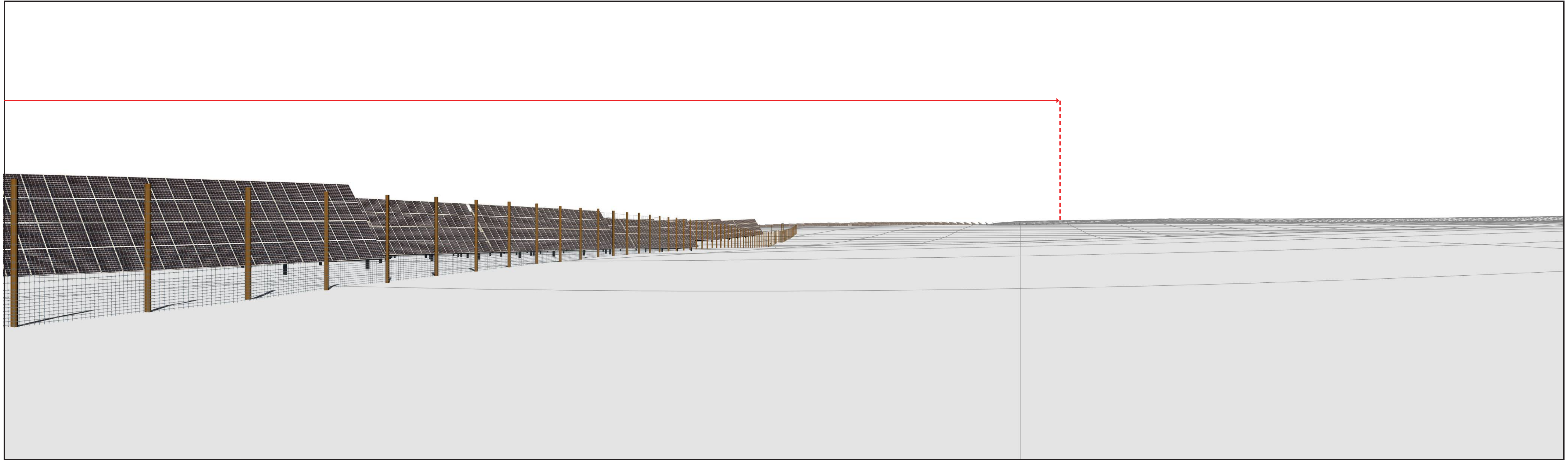
The centre of this viewpoint is facing West.

**Cottam Solar Project**

Viewpoint 32 - Infrastructure Model View

Figure 8.14.32c





**Viewing Information**

This photograph and visualisation is a cylindrical projection panorama. Hold this sheet at a comfortable arm's length from your eyes and curve the image through 90° and turn head to view. Alternatively, the visualisation can be laid flat and viewed by scanning left or right parallel to the sheet maintaining a 50cm viewing distance between your eye and the page.

This visualisation is a tool for assessment and is best used for comparison in the field from the viewpoint location shown. It cannot be considered a substitute for visiting the viewpoint location.

**Technical Information**

Refer to accompanying Technical Methodology.

**Printing Note**

This viewpoint visualisation is spread across a single sheet 841mm wide and 297mm high. To give the correct viewing distance the sheet should be printed at a scale of 1:1 on large format paper and cut to size. Do not print at A3.

**Viewpoint Direction**

The centre of this viewpoint is facing North.

**Cottam Solar Project**  
Viewpoint 32 - Infrastructure Model View  
Figure 8.14.32c





**Viewing Information**

This photograph and visualisation is a cylindrical projection panorama. Hold this sheet at a comfortable arm's length from your eyes and curve the image through 90° and turn head to view. Alternatively, the visualisation can be laid flat and viewed by scanning left or right parallel to the sheet maintaining a 50cm viewing distance between your eye and the page.

This visualisation is a tool for assessment and is best used for comparison in the field from the viewpoint location shown. It cannot be considered a substitute for visiting the viewpoint location.

**Technical Information**

Refer to accompanying Technical Methodology.

**Printing Note**

This viewpoint visualisation is spread across a single sheet 841mm wide and 297mm high. To give the correct viewing distance the sheet should be printed at a scale of 1:1 on large format paper and cut to size. Do not print at A3.

**Viewpoint Direction**

The centre of this viewpoint is facing South.

**Cottam Solar Project**

Viewpoint 32 - Winter AVR3 (Year 1)

Figure 8.14.32d





**Viewing Information**

This photograph and visualisation is a cylindrical projection panorama. Hold this sheet at a comfortable arm's length from your eyes and curve the image through 90° and turn head to view. Alternatively, the visualisation can be laid flat and viewed by scanning left or right parallel to the sheet maintaining a 50cm viewing distance between your eye and the page.

This visualisation is a tool for assessment and is best used for comparison in the field from the viewpoint location shown. It cannot be considered a substitute for visiting the viewpoint location.

**Technical Information**

Refer to accompanying Technical Methodology.

**Printing Note**

This viewpoint visualisation is spread across a single sheet 841mm wide and 297mm high. To give the correct viewing distance the sheet should be printed at a scale of 1:1 on large format paper and cut to size. Do not print at A3.

**Viewpoint Direction**

The centre of this viewpoint is facing West.

**Cottam Solar Project**

Viewpoint 32 - Winter AVR3 (Year 1)

Figure 8.14.32d





#### Viewing Information

This photograph and visualisation is a cylindrical projection panorama. Hold this sheet at a comfortable arm's length from your eyes and curve the image through 90° and turn head to view. Alternatively, the visualisation can be laid flat and viewed by scanning left or right parallel to the sheet maintaining a 50cm viewing distance between your eye and the page.

This visualisation is a tool for assessment and is best used for comparison in the field from the viewpoint location shown. It cannot be considered a substitute for visiting the viewpoint location.

#### Technical Information

Refer to accompanying Technical Methodology.

#### Printing Note

This viewpoint visualisation is spread across a single sheet 841mm wide and 297mm high. To give the correct viewing distance the sheet should be printed at a scale of 1:1 on large format paper and cut to size. Do not print at A3.

#### Viewpoint Direction

The centre of this viewpoint is facing North.

## Cottam Solar Project

Viewpoint 32 - Winter AVR3 (Year 1)

Figure 8.14.32d





#### Viewing Information

This photograph and visualisation is a cylindrical projection panorama. Hold this sheet at a comfortable arm's length from your eyes and curve the image through 90° and turn head to view. Alternatively, the visualisation can be laid flat and viewed by scanning left or right parallel to the sheet maintaining a 50cm viewing distance between your eye and the page.

This visualisation is a tool for assessment and is best used for comparison in the field from the viewpoint location shown. It cannot be considered a substitute for visiting the viewpoint location.

#### Technical Information

Refer to accompanying Technical Methodology.

#### Printing Note

This viewpoint visualisation is spread across a single sheet 841mm wide and 297mm high. To give the correct viewing distance the sheet should be printed at a scale of 1:1 on large format paper and cut to size. Do not print at A3.

#### Viewpoint Direction

The centre of this viewpoint is facing South.

## Cottam Solar Project

Viewpoint 32 - Summer AVR3 (Year 15)

Figure 8.14.32e





**Viewing Information**

This photograph and visualisation is a cylindrical projection panorama. Hold this sheet at a comfortable arm's length from your eyes and curve the image through 90° and turn head to view. Alternatively, the visualisation can be laid flat and viewed by scanning left or right parallel to the sheet maintaining a 50cm viewing distance between your eye and the page.

This visualisation is a tool for assessment and is best used for comparison in the field from the viewpoint location shown. It cannot be considered a substitute for visiting the viewpoint location.

**Technical Information**

Refer to accompanying Technical Methodology.

**Printing Note**

This viewpoint visualisation is spread across a single sheet 841mm wide and 297mm high. To give the correct viewing distance the sheet should be printed at a scale of 1:1 on large format paper and cut to size. Do not print at A3.

**Viewpoint Direction**

The centre of this viewpoint is facing West.



**Cottam Solar Project**

Viewpoint 32 - Summer AVR3 (Year 15)

Figure 8.14.32e





**Viewing Information**

This photograph and visualisation is a cylindrical projection panorama. Hold this sheet at a comfortable arm's length from your eyes and curve the image through 90° and turn head to view. Alternatively, the visualisation can be laid flat and viewed by scanning left or right parallel to the sheet maintaining a 50cm viewing distance between your eye and the page.

This visualisation is a tool for assessment and is best used for comparison in the field from the viewpoint location shown. It cannot be considered a substitute for visiting the viewpoint location.

**Technical Information**

Refer to accompanying Technical Methodology.

**Printing Note**

This viewpoint visualisation is spread across a single sheet 841mm wide and 297mm high. To give the correct viewing distance the sheet should be printed at a scale of 1:1 on large format paper and cut to size. Do not print at A3.

**Viewpoint Direction**

The centre of this viewpoint is facing North.

**Cottam Solar Project**

Viewpoint 32 - Summer AVR3 (Year 15)

Figure 8.14.32e